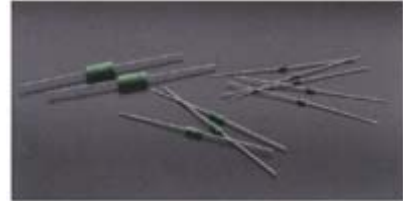


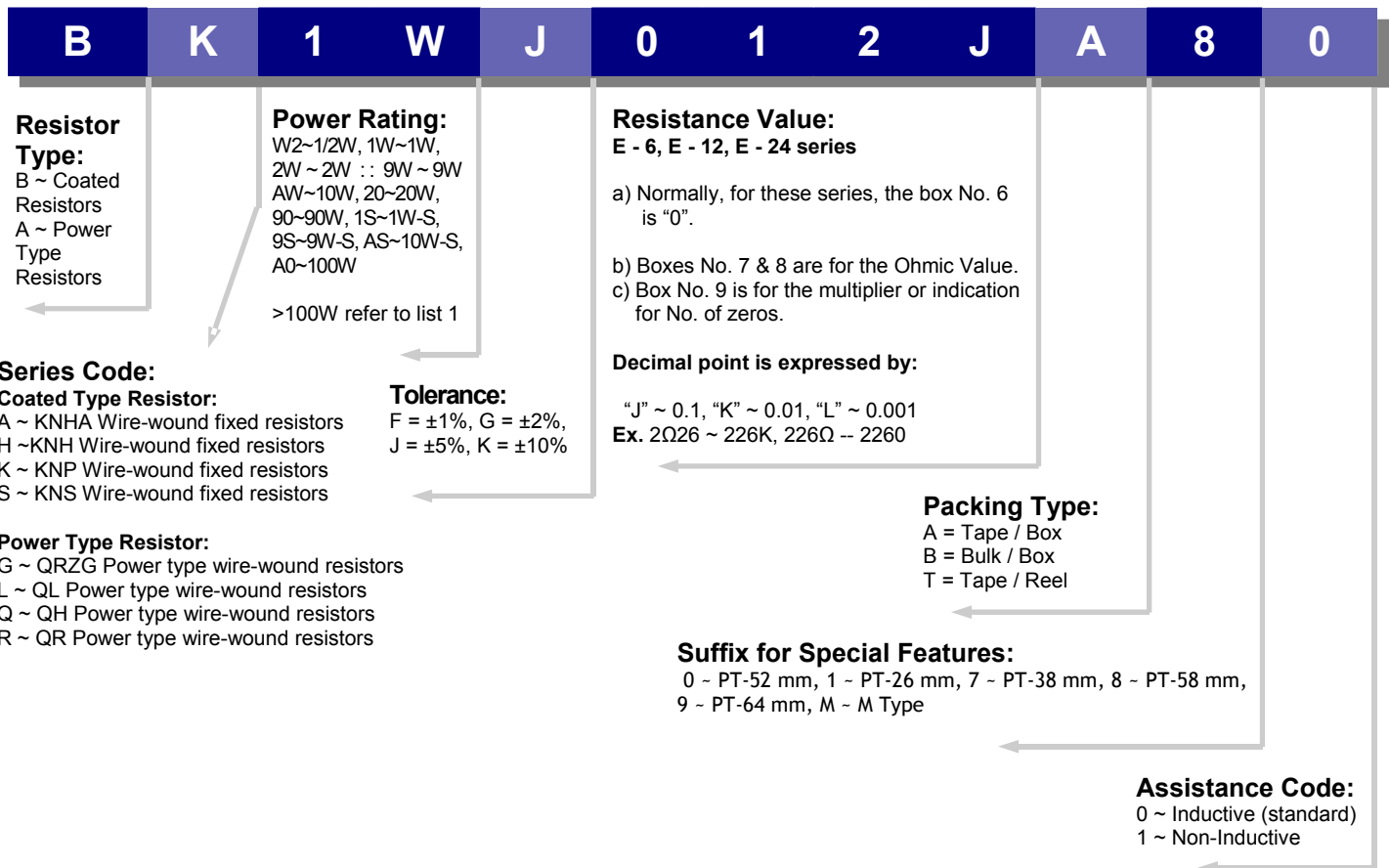
WIRE-WOUND FIXED RESISTOR

Features

- Color coating is "Green"
- Non-Inductive type available
- Excellent flame resistance
- Too low or too high ohmic value can be supplied on a case-to-case basis



Explanation of Part Number & Ordering Procedure:



WIRE-WOUND FIXED RESISTOR

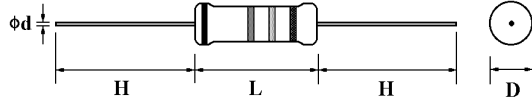
List 1: >100W Part number

A: The first digits:

B: The second digits:

Wattage	100W	200W	300W	400W	500W	600W	Wattage	10W	20W	30W	40W	50W	60W	70W	80W	90W
Code No.	A	B	C	D	E	F	Code No.	1	2	3	4	5	6	7	8	9
Ex. 250W →B5, 300W →C0							Wattage	15W	25W	35W	45W	55W	65W	75W	85W	95W
							Code No.	A	B	C	D	E	F	G	H	I

(1) KNP Type



Normal Size

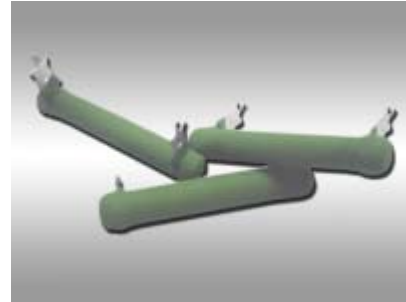
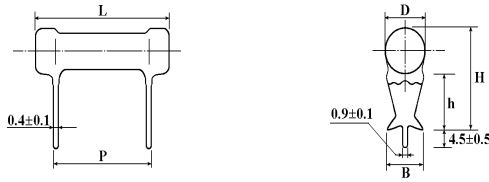
Part No.	Style	Power Rating at 70°C	Dimension (mm)				Resistance Range
			$D \pm 1$	$L \pm 1$	$H \pm 3$	$d \begin{matrix} +0.02 \\ -0.05 \end{matrix}$	
BKW2	KNP-50	1/2W (0.5W)	4	10	28	0.8	0.1Ω ~ 39Ω
BK1W	KNP-100	1W	5	12	28	0.8	0.1Ω ~ 50Ω
BK2W	KNP-200	2W	5.5	16	28	0.8	0.1Ω ~ 120Ω
BK3W	KNP-300	3W	6.5	17.5	28	0.8	0.1Ω ~ 200Ω
BK5W	KNP-500	5W	8	25	38	0.8	0.5Ω ~ 470Ω
BK7W	KNP-700	7W	8	30	38	0.8	0.5Ω ~ 470Ω
BK8W	KNP-800	8W	8	40	38	0.8	1Ω ~ 1.5KΩ
BK9W	KNP-900	9W	8	53	38	0.8	1Ω ~ 1.5KΩ

Small Size

Part No.	Style	Power Rating at 70°C	Dimension (mm)				Resistance Range
			$D \pm 1$	$L \pm 1$	$H \pm 3$	$d \begin{matrix} +0.02 \\ -0.05 \end{matrix}$	
BK1S	KNP-100-S	1W	4	10	28	0.8	0.1Ω~39Ω
BK2S	KNP-200-S	2W	5	12	28	0.8	0.1Ω~50Ω
BK3S	KNP-300-S	3W	5.5	16	28	0.8	0.1Ω~120Ω
BK5S	KNP-500-S	5W	6.5	17.5	28	0.8	0.1Ω~200Ω
BK7S	KNP-700-S	7W	8	25	38	0.8	0.5Ω~470Ω
BK8S	KNP-800-S	8W	8	30	38	0.8	0.5Ω~470Ω
BK9S	KNP-900-S	9W	8	40	38	0.8	1Ω~1.5KΩ
BKAS	KNP-1000-S	10W	8	53	38	0.8	1Ω~1.5KΩ

WIRE-WOUND FIXED RESISTOR

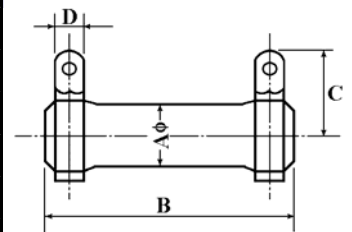
(2) KNS Type



Part No.	Style	Power Rating at 70°C	Dimension (mm)						Resistance Range
			D Max.	L ± 1.5	P ± 0.5	H ± 1	h ± 1	B ± 0.5	
BS2W	KNS-200	2W	8	19	8	19.0	12	4.5	0.1Ω~50Ω
BS3W	KNS-300	3W	8	21	10	19.0	13	4.5	0.5Ω~50Ω
BS5W	KNS-500	5W	10	26	15	21.5	13	6.0	0.5Ω~100Ω
BS7W	KNS-700	7W	10	31	20	21.5	13	6.0	1Ω~1KΩ
BS8W	KNS-800	8W	10	41	30	21.5	13	6.0	1Ω~1.5KΩ
BSAW	KNS-1000	10W	10	54	43	21.5	13	6.0	1Ω~2KΩ

(3) KNH Type

Part No.	Style	Power Rating at 70°C	Dimension (mm)				Resistance Range
			A ± 1.5	B ± 1.5	C ± 3	D ± 0.5	
BH20	KNH-20W	20W	19	50	19	4.5	0.4Ω~10KΩ
BH30	KNH-30W	30W	19	75	19	4.5	0.5Ω~15KΩ
BH40	KNH-40W	40W	19	90	19	4.5	0.6Ω~20KΩ
BH50	KNH-50W	50W	28	75	31	8	3Ω~25KΩ
BH60	KNH-60W	60W	28	90	31	8	3Ω~30KΩ
BH80	KNH-80W	80W	28	115	31	8	3Ω~40KΩ
BHA0	KNH-100W	100W	28	140	31	8	3Ω~50KΩ



Performance Specifications:

Same as on Page 61.

