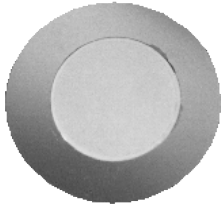


Series	Model No.	Diameter (Ømm) (D1) ± 0.1	Diameter (Ømm) (D2) ± 0.2	Height (mm) (H) ± 0.02	Height (mm) (T) ± 0.05	Capacitance ± 30%	Frequency (Hz)	Page No.
DB-E648	64PE061350	6.5	5.0	0.10	0.22	2600	13500±2000	82
DB-E648	64PE121650	12.0	9.0	0.20	0.45	4000	16500±1000	82
DB-E648	64PE151000	15.0	10.0	0.20	0.43	8000	10000±1000	82
DB-E648	64FE200390Z	20.0	15.0	0.10	0.22	Cm: 25000 / Cf: 2700	3900±500	82
DB-E648	64PE200710	20.0	15.0	0.20	0.46	13000	7100±500	82
DB-E648	64FE270300Z	27.0	20.0	0.15	0.32	Cm: 31000 / Cf: 3100	3000±300	82
DB-E648	64PE270330	27.0	20.0	0.20	0.38	35000	3300±500	82
DB-E648	64PE310290	31.0	20.0	0.20	0.46	23000	2900±300	82
DB-E648	64FE350260Z	35.0	25.0	0.25	0.48	Cm: 36000 / Cf: 4000	2600±300	82
DB-E648	64PE350280	35.0	25.0	0.25	0.51	37000	2800±300	82
DB-E648	64PE410150	41.0	25.0	0.20	0.41	40000	1500±300	82
DB-E648	64PE500110	51.0	30.0	0.20	0.41	60000	1100±300	82

\*(D1) Diameter (D2) Cermaic Diameter (H) Metal Thickness (T) Total Height

**DB-E648**



COLOUR	HOUSING	TERMINAL
GOLD*	NIL	NIL**

### ELECTRICAL SPECIFICATIONS

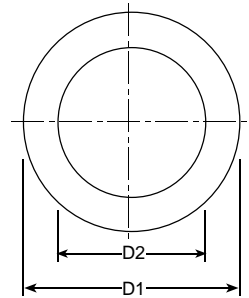
Model No.	64PE061350	64PE121650	64PE151000	64PE200710
<b>(D1)</b> Diameter ± 0.1 (mm)	6.5	12.0	15.0	20.0
<b>(D2)</b> Cermaic Diameter ± 0.2 (mm)	5.0	9.0	10.0	15.0
<b>(H)</b> Metal Thickness ± 0.02 (mm)	0.10	0.20	0.20	0.20
<b>(T)</b> Total Height ± 0.05 (mm)	0.22	0.45	0.43	0.46
Frequency (Hz.)	13500 ± 2000	16500 ± 1000	10000 ± 1000	7100 ± 500
Resistance (Ω)	2500	1500	700	250
Capacitance at 120Hz (pF)	2600 ± 30%	4000 ± 30%	8000 ± 30%	13000 ± 30%

Model No.	64PE270330	64PE310290	64PE350280	64PE410150	64PE500110
<b>(D1)</b> Diameter ± 0.1 (mm)	27.0	31.0	35.0	41.0	50.0
<b>(D2)</b> Cermaic Diameter ± 0.2 (mm)	20.0	20.0	25.0	25.0	30.0
<b>(H)</b> Metal Thickness ± 0.02 (mm)	0.20	0.20	0.25	0.20	0.20
<b>(T)</b> Total Height ± 0.05 (mm)	0.38	0.46	0.51	0.41	0.41
Frequency (Hz.)	3300 ± 500	2900 ± 300	2800 ± 300	1500 ± 300	1100 ± 300
Resistance (Ω)	200	500	250	500	800
Capacitance at 120Hz (pF)	35000 ± 30%	23000 ± 30%	37000 ± 30%	40000 ± 30%	60000 ± 30%

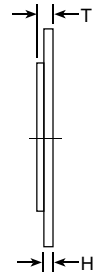
\*Stainless Steel Available on request.  
\*\*Leadwire Available on request.

### DIMENSION

Top View



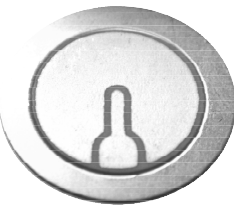
Side View



all dimensions are in mm

**DB-E648**

Feedback Type



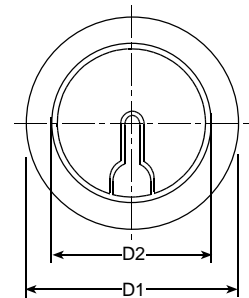
COLOUR	HOUSING	TERMINAL
GOLD*	NIL	NIL**

### ELECTRICAL SPECIFICATIONS

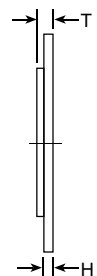
Model No.	64FE200390Z	64FE270300Z	64FE350260Z
<b>(D1)</b> Diameter ± 0.1 (mm)	20.0	27.0	35.0
<b>(D2)</b> Cermaic Diameter ± 0.2 (mm)	15.0	20.0	25.0
<b>(H)</b> Metal Thickness ± 0.02 (mm)	0.10	0.15	0.25
<b>(T)</b> Total Height ± 0.05 (mm)	0.22	0.32	0.48
Frequency (Hz.)	3900 ± 2000	3000 ± 300	2600 ± 300
Impedance (Max.) (Ω)	2500	300	200
Capacitance at 120Hz (Cm) (pF)	25000 ± 30%	30000 ± 30%	36000 ± 30%
Capacitance at 120Hz (Cf) (pF)	2700 ± 30%	3100 ± 30%	4000 ± 30%

### DIMENSION

Top View



Side View



all dimensions are in mm